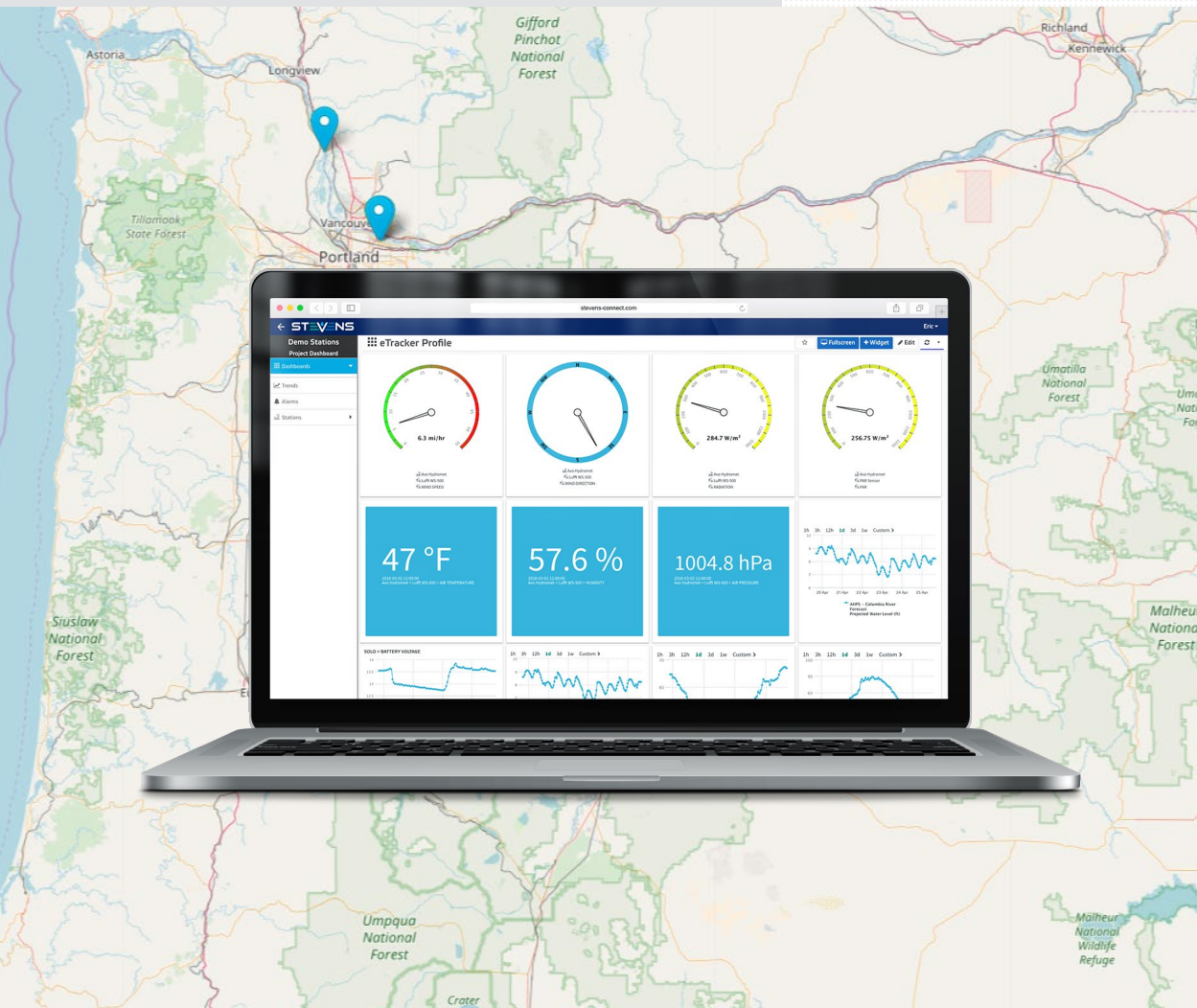




STEVENS
MEASUREMENTS TO MIND

Efficient access to remote data anytime, anywhere.



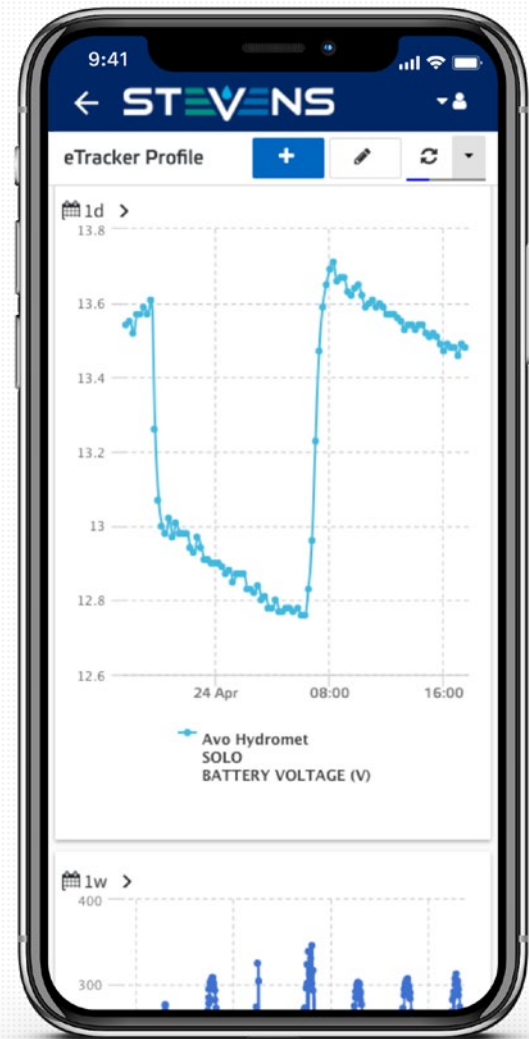
Stevens-Connect is a cloud-based data acquisition and management software system that enables the collection, analysis, reporting, and storage of data from remote monitoring locations. As cloud-based software-as-a-service (SaaS), Stevens-Connect streamlines the data management process and can be accessed from any computer or smartphone with Internet connectivity.

Stevens-Connect manages data from multiple locations and reduces the need for a localized data management software and data collection hardware.

Turn Your Data into Useful Information

Our cloud-based data hub is incredibly powerful and incredibly intuitive. It's used to configure your sensors' logging and reporting settings. It stores and analyzes your data, notifies your smartphone when conditions are met, allows you to visually create custom calculations and "virtual sensors", and it can receive and/or forward data from/to 3rd-party systems.

- Immediate access to data, anywhere, any device.
- Reduced IT requirements: no need for upgrades, transfer to other PCs, uptime maintenance, security.
- No special hardware required, other than a modem at each monitoring location.
- No software to install or reinstall.
- Easily scalable: add additional station data collection when needed. Access data from any number of computers, even simultaneously.
- Data received via cellular (CDMA and GSM) or satellite communications (GOES, Iridium, Inmarsat)
- Custom math functions and calculations
- Selectable calculations
- Data output in XML, Excel, .CSV and other formats
- Alarms
- Map view and integration of external data feeds
- Integrated Report Writers
- REST API supports integration with 3rd-party apps



Stevens-Connect is a cloud-based application that is as much at home on your smartphone as it is on your laptop. You don't need to install an app, just go to stevens-connect.com.

 **KISTERS**

 **AQUATIC**
INFORMATICS™

Forward Data to Any 3rd-Party Software

Stevens-Connect is an easy to use and easily accessible reporting and analysis tool, ideal for visualizing your remote data. However, if you prefer to use other software like Aquarius or WISKI, that's no problem: data can be forwarded to another online destination via FTP or HTTP for use in your software, or you can choose to export the data to work with it in Microsoft Excel.

Cloud-based logging, analysis, reporting, and storage of data from remote monitoring locations.

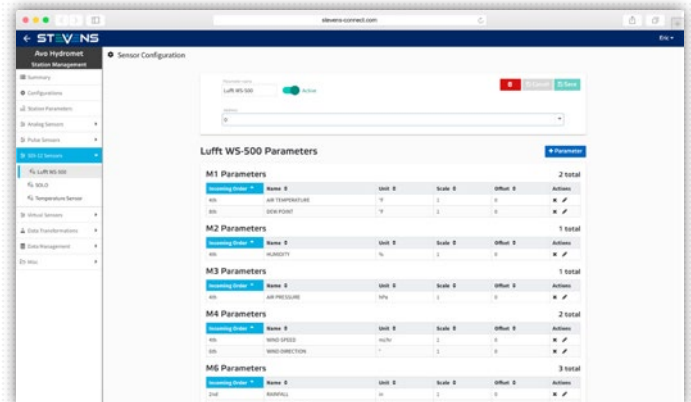


Drag-and-Drop Customizable Dashboard

Configure what data to show and how with dashboard widgets. Place them where you want and stretch to resize. Choose high-visibility single data values, line graphs, bar charts, fuel-gauge style graphs, or 360° directional graphs, for any parameter.

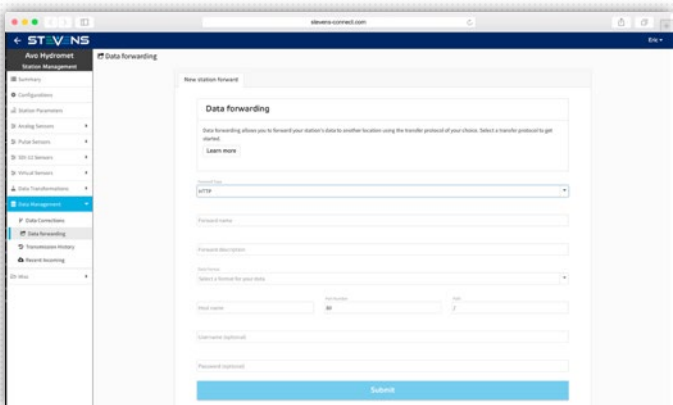
Remotely Configure Remote Avo or eTracker

Configure all aspects of the station including logging and reporting intervals and all analog, pulse and SD-12 sensors. Make changes at any time, from any device. Make changes at any time, even if the station is in low-power (sleep) mode—all changes made will be synced to the remote station when it next connects.



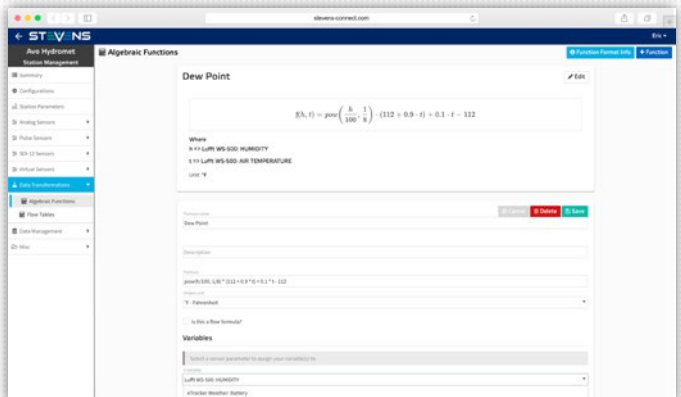
Forward Data to 3rd-Party Software

Stevens-Connect is an easy to use and easily accessible reporting and analysis tool for visualizing your data. However, if you prefer to use other software, data can be automatically formatted and forwarded to an external destination.



Custom Calculations and Data Transformations

Use the visual formula builder to create simple to complex math functions using any sensor data as variables. Create a “virtual sensor” from this data to create new graphs or serve as inputs to other calculations.



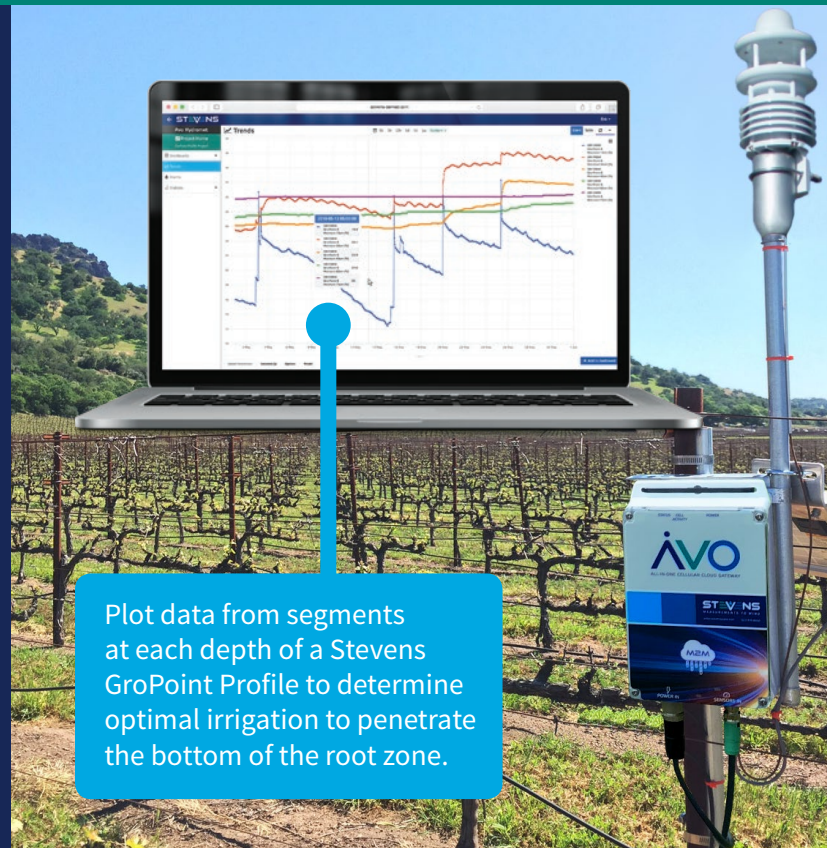
Unique Features

- **True cloud data service.** Data via cellular or satellite networks is sent directly and securely to the Amazon cloud service. No back-end database hosting and web server controlled by Stevens in which data flow takes a detour to the cloud.
- **Web services.** Integrate third party web services for enhance data analysis.
- **Custom Math Functions.** Ability to set up simple to complex algebraic math functions and logic “if” statements using any of the sensor measurements as variables and display the resulting calculate data as separate graphs and data tables.
- **Selectable calculations.** min/ max, average, totalization, evapotranspiration, flow, dew point, wind chill, and conversion of raw data.
- **Direct data access options.** Third-party programs can access data using REST, API or HTTP post.
- **Data format flexibility.** Forward data in various formats for 3rd party software platforms, like Aqarius or WISKI, or in other formats such as pseudo-binary, SHEF, and more.
- **Data output** available in an XML, Excel, .CSV, and many other popular data formats.
- **Automated updates:** Software updates and new features are automatically installed.
- **Alarms:** Automatic alerts from user defined alarm condition for any measurement or calculation can be sent via email or SMS.
- **Security:** Three user access levels for configurations, data management interface, and visualization. Data is stored on the secured and redundant Amazon Cloud service and can be export to other servers using HTTPS (optional FTP).

STEVENS

Stevens Water Monitoring Systems, Inc.
12067 NE Glenn Widing Drive, Suite 106,
Portland, Oregon 97220

1 800 452 5272 | 503 445 8000
www.stevenswater.com



Plot data from segments at each depth of a Stevens GroPoint Profile to determine optimal irrigation to penetrate the bottom of the root zone.